

FIELD COPY

COUNTY OF LOS ANGELES
ROAD DEPARTMENT



ROSEMEAD QUAD

BENCH MARKS

1960

PREFACE

The Road Department level net is composed of some 1,000 miles of levels supporting more than 10,000 bench marks. In 1955, a major re-adjustment of the net was undertaken resulting in revised bench mark elevations of which the accompanying list is a part.

To facilitate the adjustment, indexing, and distribution of adjusted values of the net, the county territory was divided into 30 quads or areas. For identification purposes each quad was given a name, viz., "Rosemead", "La Mirada", "Santa Fe", etc. When bench marks and elevations in the Road Dept. net are used, the name of the quad in which the bench mark is located and the date of the adjustment of the elevation must be included in the bench mark description, e.g.,

 SQ 908 - L & T in E. ob. Miscatel Ave. on C/L prod.
 Scott St. (Rosemead - 1955) Elev. 333.517

It is expected that this general adjustment will, for the most part, remain sound for the next 15 or 20 years. As new circuits are completed, however, re-adjustment of individual quads may become advisable. It is expected that these subsequent adjustments will be in the nature of a few hundredths of a foot. When a quad is re-adjusted, new elevation lists will be published and the date of the re-adjustment will replace the "1955" at the end of the bench mark description. Two bench marks in the same quad with different adjustment dates will not normally join each other. Since all adjustments taper out to nothing at the periphery of the quad, any bench mark in one quad will join any bench mark in another quad regardless of their respective adjustment dates.

The basic accuracy of the net is reflected by an indicated field probable error of ± 0.12 foot per mile of leveling as determined from 298 conditions of closure. However, many years experience in vertical control in the greater Los Angeles basin & Antelope Valley indicate that because of varying degrees of subsidence and heaving, the true datum is recovered only by obtaining substantial agreement of a number of bench marks.

The users of this net are invited to assist in its maintenance by notifying this Department of cases of obliteration, apparent mistakes in descriptions or elevations, and proven disturbance of bench marks.

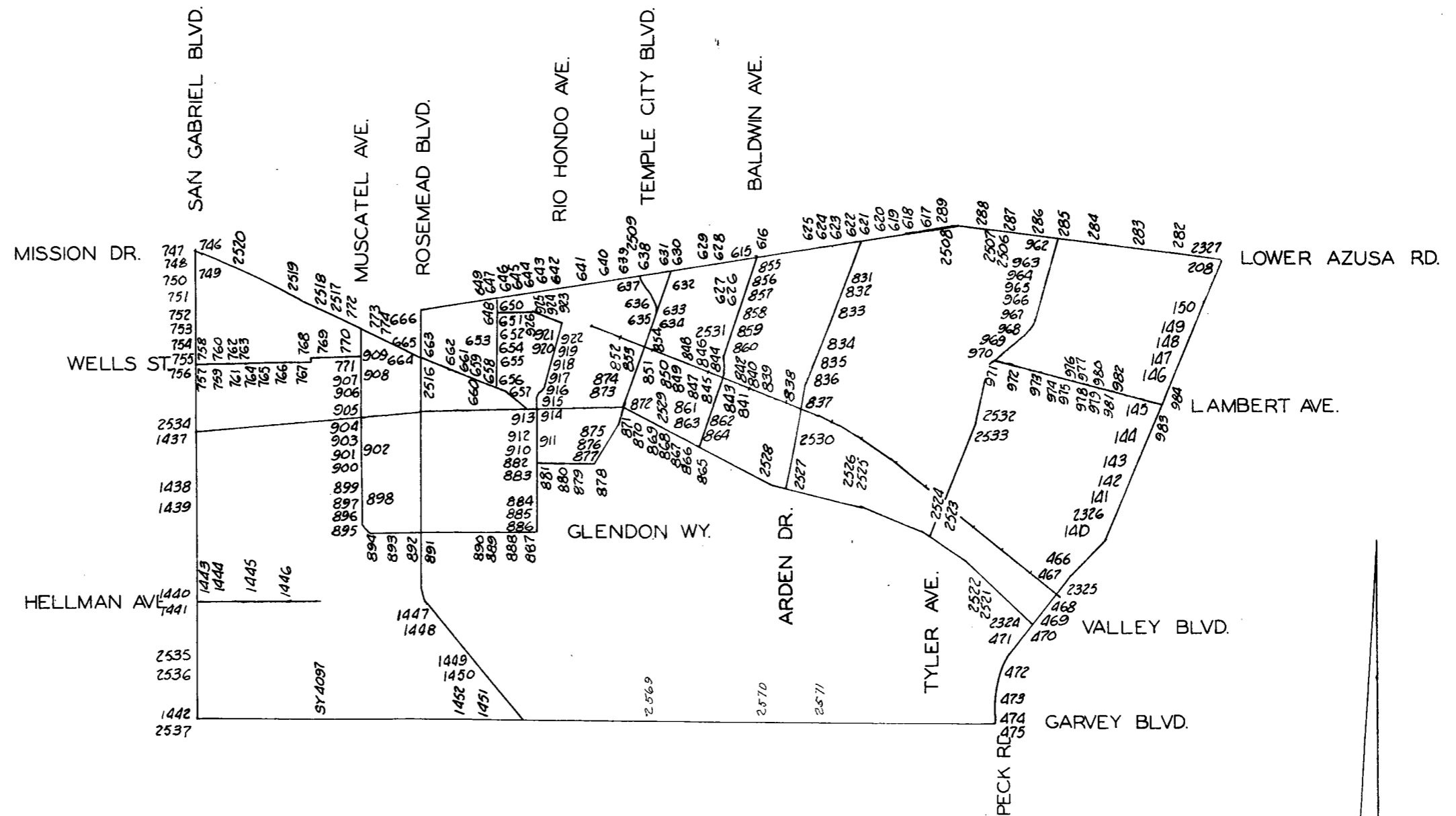
Datum: U.S. Coast and Geodetic Survey Sea Level Datum of 1929, through the medium of the Los Angeles County Engineer Precise Level Net, 1952 Adjustment.

Abbreviations Used in Bench Mark Listings

ABUT--Abutment	L+BN--Lead and Bench Mark Nail
ANG PT--Angle Point	L+BR--Lead and Brad
BC--Beginning of Curve	L+N--Lead and Nail
BCR--Beginning of Curb Return	L+PK--Lead and PK Nail
BLDG--Building	L+SPK--Lead and Spike
BT SPK--Boat or Bolt Spike	L+T--Lead and Tack
CB RET--Curb Return	MCR--Middle of Curb Return
C/L INT--Center Line Intersection	MKD--Marked
C/L PROD--Center Line Produced	NR--Near
COE--Corps of Engineers	OPP--Opposite
CONC--Concrete	PI--Point of Intersection
CS MON--County Surveyor Monument	PK+W--PK Nail and Washer
CS BR CAP--County Surveyor Brass Cap Monument	P/L--Property Line
CT SPK--Cut Spike	P O S T--Point on Semi-tangent
CTR--Center	PP--Power Pole
DN--Down	PVMT--Pavement
DR--Driveway	R D--Road Department
EC--End of Curve	RDBM--Road Department Bench Mark
ENT--Entrance	RR--Railroad
FC--Flood Control (Dept. LA County)	SPK T+W--Spike, Tin and Washer
FTG--Footing	USC+GS--United States Coast and Geodetic Survey
HDWL--Headwall	USGS--United States Geological Survey
HSE--House	WK--Walk
IP--Iron Pipe	±--Plus or Minus
LACE--Los Angeles City Engineer	+--And

ROSEMEAD QUAD

LOS ANGELES COUNTY ROAD DEPARTMENT
SURVEY SECTION FIELD ENGINEERING DIVISION



SCALE - 1/4 MILE

QUAD-YEAR	ELEV	DESCRIPTION (INCLUDE QUAD AND YEAR IN DESCRIPTION)	BM NUMBER
BASELINE (1955)	256.872	CS MON 116FT E C/L WALNUT GROVE AVE 40FT S C/L GARVEY BLVD 2FT S CB FACE IN WELL WITH COVER	SY 4097
BASELINE (1955)	296.923	L+T 4FT W BCR @ SW COR FORREST GROVE ST + PECK RD	SG 141A
BASELINE (1955)	308.669	L+T @ SW COR DRIVEWAY 48FT E C/L PECK RD + 100FT S C/L BASYE ST	SG 144A
BASELINE (1955)	318.334	L+T 1FT W BCR @ SW COR PECK RD + EMERY ST	SG 148A
BASELINE (1955)	319.440	L+T C/L INT PECK RD + MULHALL ST E	SG 149A
BASELINE (1955)	319.700	CS MON IN WELL 8IN DN ON C/L RANCHITO ST 21FT E C/L PECK RD MKD (EL MONTE N-2)	SG 150A
BASELINE (1955)	323.267	L+N 1FT N BCR @ NE COR PECK RD + LOWER AZUSA RD	SG 208A
BASELINE (1955)	319.791	L+T IN CONC WALK TO HSE NO 11445 60FT N C/L LOWER AZUSA RD + 23FT W C/L ELROVIA AVE	SG 282A
BASELINE (1955)	318.454	L+T ON SE COR CONC SLAB 30FT S C/L LOWER AZUSA RD + 36FT W C/L CEDAR AVE	SG 283A
BASELINE (1955)	316.639	RDBM TAG IN N CB OF LOWER AZUSA RD 15FT E CB RET @ NE COR OF TYLER AVE 30FT N + 92FT E C/L INT	SG 285A
BASELINE (1955)	304.606	BT SPK E CB 8FT N BCR @ NE COR LOWER AZUSA RD + EL MONTE AVE	SG 289
BASELINE (1955)	289.400	L+T @ N BCR @ NW COR PECK RD + LEE LANE ST	SG 466A
BASELINE (1955)	283.513	RD HD NAIL IN 1IN STEEL WASHER @ E BCR + W END OF CATCH BASIN @ NE COR PECK RD + VALLEY BLVD	SG 469A
BASELINE (1955)	276.890	L+T IN W CB 3FT S CATCH BASIN @ NW COR PECK RD + MEEKER AVE	SG 472A
BASELINE (1955)	273.452	L+T 8FT E OF CONC DR TO GAS STA @ NW COR GARVEY AVE + PECK RD	SG 474A
BASELINE (1955)	273.384	L+BN 1FT W BCR @ SW COR GARVEY AVE + PECK RD	SG 475A
BASELINE (1955)	317.010	USC+GS BR CAP MON IN CONC TRAFFIC SIGNAL BASE 45FT N C/L LOWER AZUSA RD + 22FT E C/L BALDWIN AVE MKD (X-1141 1961)	SG 614A
BASELINE (1955)	313.703	R D MON @ C/L INT BALDWIN AVE + LOWER AZUSA RD	SG 615A
BASELINE (1955)	303.579	L+T IN CTR OF CB RET @ SE COR LOWER AZUSA RD + EL MONTE AVE	SG 617A
BASELINE (1955)	304.138	L+SPK N CB 12FT E BCR @ NE COR LOWER AZUSA RD + DOREEN AVE	SG 618A
BASELINE (1955)	304.748	L+SPK N CB 3FT E BCR @ NE COR LOWER AZUSA RD + HALIFAX RD MKD (TE 471)	SG 620A
BASELINE (1955)	305.478	L+SPK N CB 5FT E BCR @ NE COR LOWER AZUSA RD + HALLOWELL AVE MKD (TE 473)	SG 621A

QUAD-YEAR	ELEV	DESCRIPTION (INCLUDE QUAD AND YEAR IN DESCRIPTION)	BM NUMBER
BASELINE (1955)	306.157	L+SPK E CB 8FT S BCR @ SE COR ARDEN DR + LOWER AZUSA RD MKD (TE 474)	SG 622
BASELINE (1955)	306.676	L+SPK S CB 8FT W BCR @ SW COR LOWER AZUSA RD + ARDEN DR MKD (TE 475)	SG 623A
BASELINE (1955)	307.027	L+SPK S CB LOWER AZUSA RD 55FT E C/L PROD GLICKMAN AVE 8FT E OF W DR TO CHARLES E GIDLEY SCHOOL MKD (TE 476)	SG 624A
BASELINE (1955)	310.283	L+SPK E CB 5FT N BCR @ NE COR LOWER AZUSA RD + BIRCHLAND PL MKD (TE 477)	SG 625A
BASELINE (1955)	316.541	L+T N CB LOWER AZUSA RD ON C/L PROD ROWLAND AVE 68FT W C/L WILLMONTE AV	SG 627A
BASELINE (1955)	315.864	L+SPK N CB 5FT E BCR @ NE COR AGNES AVE + LOWER AZUSA RD MKD (TE 10)	SG 628A
BASELINE (1955)	313.994	L+T WK 40FT S C/L LOWER AZUSA RD ON C/L PROD GOLDEN WEST AVE	SG 629A
BASELINE (1955)	312.340	L+SPK S CB 5FT E BCR @ SE COR ELLIS LN + LOWER AZUSA RD	SG 630A
BASELINE (1955)	312.859	L+T N CB LOWER AZUSA RD 40FT W C/L PROD ELLIS LN IN FRONT OF HSE NO 9667	SG 631A
BASELINE (1955)	314.885	L+T N CB 1FT W BCR @ NE COR LOWER AZUSA RD + TEMPLE CITY BLVD	SG 638A
BASELINE (1955)	315.327	L+SPK N CB 5FT E BCR @ NE COR LOWER AZUSA RD + FIESTA AVE MKD (TE NO 20)	SG 639A
BASELINE (1955)	316.105	L+SPK N CB 6FT W BCR @ NW COR LOWER AZUSA RD + CLOVERLY AVE MKD (TE 21)	SG 640A
BASELINE (1955)	316.902	L+SPK N CB 6FT W BCR @ NW COR HELED AVE + LOWER AZUSA RD MKD (TE 22)	SG 641A
BASELINE (1955)	318.496	L+T N CB LOWER AZUSA RD 80FT W CONC DR TO HSE NO 9371 1FT E OF END CB 420FT E RIO HONDO AVE	SG 642A
BASELINE (1955)	318.122	R D MON ON C/L LOWER AZUSA RD @ ANG PT 420FT E RIO HONDO AVE	SG 643A
BASELINE (1955)	330.882	USC+GS BR CAP MON IN W CONC ABUTMENT @ SW COR OF LOWER AZUSA RD BRIDGE NO B 1053 OVER EATON CN WASH 34FT S C/L LOWER AZUSA RD + 200FT W C/L RIO HONDO AVE MKD (BM S 1142-1961)	SG 644A
BASELINE (1955)	327.977	L+BN S CB LOWER AZUSA RD 40FT W C/L SPRR + E OF ENCINITA AVE	SG 646A
BASELINE (1955)	324.247	L+SPK IN N CB 6FT E BCR @ NE COR LOWER AZUSA RD + ENCINITA AVE MKD (WM254-A)	SG 647A
BASELINE (1955)	323.890	L+T N CB 1FT W BCR @ NW COR LOWER AZUSA RD + ENCINITA AVE	SG 648A
BASELINE (1955)	322.281	CS MON @ C/L INT LOWER AZUSA RD + ENCINITA AVE	SG 649A
ROSEMEAD (1960)	318.022	CS MON @ C/L INT ENCINITA AVE + PITKIN ST	SG 650
ROSEMEAD (1960)	318.740	L+T W CB ENCINITA AVE ON C/L PROD PITKIN ST	SG 651

QUAD-YEAR	ELEV	DESCRIPTION (INCLUDE QUAD AND YEAR IN DESCRIPTION)	BM NUMBER
ROSEMEAD (1960)	315.417	C S MON @ C/L INT ENCINITA AVE + RIO DELL ST	SG 652
ROSEMEAD (1960)	315.544	L+T W CB ENCINITA AVE 160FT S C/L RIO DELL ST OPP HSE NO 4330	SG 653
ROSEMEAD (1960)	313.271	CS MON @ C/L INT ENCINITA AVE + ROSE ST	SG 654
ROSEMEAD (1960)	313.925	L+SPK E CB 4FT S BCR @ SE COR ENCINITA AVE + ROSE ST MKD (WM 241)	SG 655A
ROSEMEAD (1960)	312.268	L+SPK E CB 5FT N BCR @ NE COR ENCINITA AVE + MISSION DR MKD (WM 240)	SG 656
ROSEMEAD (1960)	312.235	CS MON @ C/L INT ENCINITA AVE + MISSION DR	SG 657
ROSEMEAD (1960)	313.933	CS MON C/L ANG PT MISSION DR 160FT W C/L ENCINITA AVE 26FT S OF N CB	SG 658
ROSEMEAD (1960)	316.519	CS MON @ C/L INT MISSION DR + LOMA AVE	SG 659
ROSEMEAD (1960)	316.805	L+T N CB MISSION DR ON C/L PROD LOMA AVE	SG 660
ROSEMEAD (1960)	317.819	CS MON @ C/L INT MISSION DR + NEWBY AVE	SG 661
ROSEMEAD (1960)	325.368	L+T CONC WK MAIN ENT OF ROSEMEAD HIGH SCHOOL 1FT E OF W EDGE 40FT N C/L MISSION DR	SG 662
BASELINE (1955)	331.212	CS MON C/L MISSION DR 60FT E C/L ROSEMEAD BLVD	SG 663A
BASELINE (1955)	332.528	L+T E CB 7FT S CATCH BASIN @ NE COR MISSION DR + ROSEMEAD BLVD	SG 664A
BASELINE (1955)	333.086	L+T MCR @ NW COR MISSION DR + ROSEMEAD BLVD	SG 665A
BASELINE (1955)	336.598	L+T W CB ROSEMEAD BLVD 50FT S C/L PROD LOWER AZUSA RD	SG 666
BASELINE (1955)	366.375	L+T CTR OF CB RET @ NW COR SAN GABRIEL BLVD + MISSION DR	SG 746
BASELINE (1955)	365.546	CS MON @ C/L INT SAN GABRIEL BLVD + MISSION DR	SG 747
BASELINE (1955)	365.765	L+T W CB 7FT S BCR @ SW COR SAN GABRIEL BLVD + MISSION DR	SG 748
ROSEMEAD (1960)	362.162	L+T W CB 2FT S BCR @ SW COR SAN GABRIEL BLVD + FAIRVIEW AVE	SG 750
ROSEMEAD (1960)	355.947	CS MON @ C/L INT CENTRAL AVE + SAN GABRIEL BLVD	SG 751
ROSEMEAD (1960)	356.597	L+T W CB 5FT N BCR @ NW COR SAN GABRIEL BLVD + CENTRAL AVE	SG 752
ROSEMEAD (1960)	349.700	L+T W CB 2FT N BCR @ NW COR SAN GABRIEL BLVD + CHESTNUT AVE	SG 753
ROSEMEAD (1960)	348.823	L+T W CB 4FT S BCR @ SW COR SAN GABRIEL BLVD + CHESTNUT AVE	SG 754

QUAD-YEAR	ELEV	DESCRIPTION (INCLUDE QUAD AND YEAR IN DESCRIPTION)	BM NUMBER
ROSEMEAD (1960)	342.280	L+SPK W CB 10FT S BCR @ SW COR SAN GABRIEL BLVD + WELLS ST MKD (WM 6)	SG 755
ROSEMEAD (1960)	342.365	CS MON 14FT W C/L INT WELLS ST + SAN GABRIEL BLVD	SG 756
ROSEMEAD (1960)	342.517	CS MON @ C/L INT WELLS ST + SAN GABRIEL BLVD	SG 757
ROSEMEAD (1960)	342.415	L+T E CB 4FT S BCR @ SE COR SAN GABRIEL BLVD + WELLS ST	SG 758
ROSEMEAD (1960)	342.889	CS MON @ C/L INT WELLS ST + GLADYS AVE	SG 759
ROSEMEAD (1960)	343.601	L+SPK E CB 1FT S BCR @ SE COR GLADYS AVE + WELLS ST MKD (WM 386)	SG 760
ROSEMEAD (1960)	342.493	CS MON @ C/L INT WELLS ST + CHARLOTTE AVE TO THE N	SG 761
ROSEMEAD (1960)	342.286	CS MON @ C/L INT WELLS ST + CHARLOTTE AVE TO THE S	SG 762
ROSEMEAD (1960)	342.422	L+BN W CB 22FT S BCR @ SW COR WELLS ST + CHARLOTTE AVE TO THE S	SG 763
ROSEMEAD (1960)	332.840	FC MON @ ANGLE PT OF WING WALL @ SE COR BRIDGE NO B800 15FT W + 25FT S C/L INT DELTA ST + WELLS ST MKD (58-513)	SG 764
ROSEMEAD (1960)	338.683	L+T CTR CB RET @ NE COR WELLS ST + EARLE ST	SG 765
ROSEMEAD (1960)	338.812	L+BN N CB WELLS ST 6FT W OF END CB 60FT E OF DR TO HSE NO 8471 6FT W OF EDISON CD R/W	SG 766
ROSEMEAD (1960)	338.736	L+BN 1FT FROM NE COR OF WK TO HSE NO 4319 23FT W + 55FT S C/L INT WALNUT GROVE AVE + WELLS AVE MKD (WM 285)	SG 767
ROSEMEAD (1960)	341.579	L+T S EDGE CONC WK TO HSE NO 4406 WALNUT GROVE AVE 45FT N C/L EDMOND DR MKD (WM 286)	SG 768
ROSEMEAD (1960)	343.704	L+T W EDGE CONC DR TO HSE NO 8646 EDMOND DR 30FT S C/L	SG 769
ROSEMEAD (1960)	340.502	CS MON @ C/L INT MUSCATEL AVE + EDMOND DR	SG 770
ROSEMEAD (1960)	341.459	L+T NR CTR CONC WK TO HSE NO 4328 MUSCATEL AVE 50FT E C/L 7FT S C/L PRCD EDMOND DR	SG 771
BASELINE (1955)	346.086	SPK IN S EDGE CONC APRON TO GAS STA NO 8801 27FT N + 25FT E C/L INT MISSION DR + MUSCATEL AVE MKD (WM 44)	SG 772
BASELINE (1955)	339.211	SPK E EDGE CONC WK TO HSE NO 8868 35FT S + 17FT W C/L INT MISSION DR + IVAR AVE 3FT S OF END OF WK	SG 773A
BASELINE (1955)	336.321	SPK NR SW COR CONC APRON TO STORE NO 8923 40FT N + 20FT E C/L INT MISSION DR + IVAR AVE TO THE N	SG 774
ROSEMEAD (1960)	296.645	L+BN E CB 1FT N BCR @ NE COR OF ARDEN DR + ARDEN WAY	SG 831

QUAD-YEAR	ELEV	DESCRIPTION (INCLUDE QUAD AND YEAR IN DESCRIPTION)	BM NUMBER
ROSEMEAD (1960)	295.154	RE TAG NO 2000 E CB @ ANG PT @ S P/L OF HSE NO 4544 115FT S C/L INT ARDEN DR + ARDEN WAY	SG 832
ROSEMEAD (1960)	292.806	L+BN E CB 4FT N BCR @ NE COR ARDEN DR + MARSEN ST	SG 833
ROSEMEAD (1960)	287.896	L+BN E CB 3FT N BCR @ NE COR ARDEN DR + BISBY ST	SG 834
ROSEMEAD (1960)	285.953	RDBM TAG E CB ARDEN DR 2FT N CB RET @ NE COR GIDLEY ST 30FT E + 70FT N C/L INT	SG 835A
ROSEMEAD (1960)	284.663	L+T N END OF CONC WK TO HSE NO 4226 30FT S C/L VENITA ST + 87FT E C/L ARDEN DR	SG 836A
ROSEMEAD (1960)	284.267	L+SPK E CB 20FT E C/L ARDEN DR 55FT N C/L PROD RAILROAD DR MKD (WM 634)	SG 837
ROSEMEAD (1960)	280.516	L+SPK N EDGE OF CONC WK TO HSE NO 4038 DE GARMO AVE 75FT S C/L RAILROAD DR	SG 838
ROSEMEAD (1960)	278.954	L+SPK CTR OF CONC WK TO HSE NO 10159 33FT N C/L RAILROAD DR 10FT W C/L PROD VELMA AVE	SG 839
ROSEMEAD (1960)	280.758	L+SPK NE COR OF CONC DR TO HSE NO 4153 12FT W C/L GIBSON RD + 105FT S C/L BESSIE AVE	SG 840
ROSEMEAD (1960)	283.116	L+T CTR OF CONC WK TO N ENT TO HSE NO 4159 35FT S C/L BESSIE AVE + 60FT W C/L GIBSON RD	SG 841
ROSEMEAD (1960)	281.486	L+SPK NE COR OF CONC DR TO HSE NO 4163 70FT S C/L BESSIE AVE + 20FT W C/L SHIRLEY AVE MKD (WM 486)	SG 842
ROSEMEAD (1960)	283.034	RDBM TAG IN S CB BESSIE AVE 2FT E CB IN FRONT OF HSE NO 9960 30FT S C/L BESSIE AVE + 135FT W BALDWIN AVE	SG 843A
ROSEMEAD (1960)	283.916	L+T S EDGE OF CONC WK TO HSE NO 4163 40FT W C/L OF EUNICE AVE + 95FT S C/L BESSIE AVE	SG 846
ROSEMEAD (1960)	285.852	L+T N EDGE CONC + STONE WK TO HSE NO 4168 45FT E C/L ROWLAND AVE + 70FT S C/L BESSIE AVE	SG 847
ROSEMEAD (1960)	286.179	CS MON @ C/L INT ROWLAND AVE + BESSIE AVE	SG 848
ROSEMEAD (1960)	292.082	L+DN SE COR OF SPRR SIGNAL 30FT W C/L PROD ROWLAND AVE + 50FT N C/L BESSIE AVE	SG 849
ROSEMEAD (1960)	298.222	L+SPK W END OF WINGWALL CONC CULV 31FT W C/L TEMPLE CITY BLVD 9FT S OF S RAIL SPRR MKD (TE 16)	SG 851
ROSEMEAD (1960)	298.199	L+SPK W END WINGWALL CONC CULV 31FT W C/L TEMPLE CITY BLVD 9FT N OF N RAIL SPRR MKD (TE 15)	SG 853
ROSEMEAD (1960)	300.158	RDBM TAG IN S CONC ABUT OF TEMPLE CITY BLVD BRIDGE NO B1051 OVER EATON CN WASH 31FT E C/L TEMPLE CITY BLVD + 66FT N SPRR	SG 854A
ROSEMEAD (1960)	302.781	L+T IN CONC WLK TO OFFICE BLDG NO 4429 BALDWIN AVE 10FT S OF N END OF BLDG 51FT W C/L BALDWIN AVE + 1075FT S LOWER AZUSA RD	SG 857/
ROSEMEAD (1960)	290.966	L+BN CONC STEP TO HSE NO 9924 @ SW COR BALDWIN AVE + GIDLEY ST 40FT S + 95FT W C/L INT	SG 860/
ROSEMEAD (1960)	274.415	RD MON @ C/L INT ROSE ST + BALDWIN AVE	SG 862/

JUL 1964

LOS ANGELES COUNTY ROAD DEPARTMENT
SURVEY SECTION FIELD ENGINEERING DIVISION

PAGE 6

QUAD-YEAR	ELEV	DESCRIPTION (INCLUDE QUAD AND YEAR IN DESCRIPTION)	BM NUMBER
ROSEMEAD (1960)	275.504	L+T S EDGE OF CONC WK TO HSE NO 4032 40FT E C/L BALDWIN AVE + 55FT S C/L ROSE ST	SG 863
ROSEMEAD (1960)	272.784	RDBM TAG IN N CB OF VALLEY BLVD 1FT W CB RET @ NW COR OF BALDWIN AVE 38FT S + 50FT W C/L INT BALDWIN AVE	SG 865A
ROSEMEAD (1960)	277.657	L+T IN S CB VALLEY BLVD 1FT W CB RET @ SW COR OF STRANG AVE 38FT S + 50FT W C/L INT	SG 869A
ROSEMEAD (1960)	281.278	L+T NR CTR OF CB RET @ SE COR VALLEY BLVD + TEMPLE CITY BLVD 42FT S + 45FT E C/L INT	SG 871A
ROSEMEAD (1960)	281.970	L+BN IN E CB TEMPLE CITY BLVD 10FT S CB RET @ NE COR VALLEY BLVD 32FT E + 75FT N C/L INT	SG 872A
ROSEMEAD (1960)	286.180	L+BN IN 2IN CONC WLK TO HSE NO 4043 TEMPLE CITY BLVD 145FT S + 55FT W C/L INT ABILENE ST + TEMPLE CITY BLVD	SG 873A
ROSEMEAD (1960)	285.185	L+BN SCB 9FT E BCR 15FT S + 67FT E C/L INT TEMPLE CITY BLVD + ABILENE ST	SG 874
ROSEMEAD (1960)	278.900	L+SPK E CB ELLIS LAND 20FT E C/L 7FT N C/L PROD STEELE ST MKD (WM 376)	SG 875
ROSEMEAD (1960)	274.645	L+SPK W CB 4FT S BCR @ SW COR ELLIS LANE + GUESS ST MKD (R 40)	SG 876
ROSEMEAD (1960)	271.525	CS MON 27FT N C/L INT ELLIS LANE + RALPH ST	SG 877
ROSEMEAD (1960)	272.801	L+SPK W CB 15FT N BCR @ NW COR ELLIS LANE + RALPH ST MKD (WM 378)	SG 878
ROSEMEAD (1960)	274.657	L+T NE COR CONC DR TO HSE NO 9514 RALPH ST 26FT S C/L + 47CFT W ELLIS LANE	SG 879
ROSEMEAD (1960)	281.133	L+T CTR CB RET @ NE COR RIO HONDO AVE + RALPH ST MKD (R-8)	SG 881
ROSEMEAD (1960)	280.381	L+BRAD NR CTR CB RET @ SW COR RALPH ST + RIO HONDO AVE	SG 882
ROSEMEAD (1960)	273.153	L+SPK E CB 10FT S BCR @ SE COR RIO HONDO AVE + DE ADALENA ST MKD (WM 363)	SG 883
ROSEMEAD (1960)	273.123	L+T CTR CB RET @ NW COR RIO HONDO AVE + E MARSHALL ST MKD (R-6)	SG 884
ROSEMEAD (1950)	272.765	L+T CTR CB RET @ SW COR RIO HONDO + MARSHALL ST	SG 885
ROSEMEAD (1960)	269.048	L+T CTR CB RET @ NW COR RIO HONDO AVE + GLENDON WAY MKD (R-5)	SG 886
ROSEMEAD (1960)	267.706	L+T CTR CB RET @ SW COR RIO HONDO AVE + GLENDON WAY	SG 887
ROSEMEAD (1960)	269.036	L+T W CB OF MAC DR TO HSE NO 9318 GLENDON WAY 30FT S C/L + 333FT E LINDALEE AVE	SG 888
ROSEMEAD (1960)	271.857	L+T W EDGE CONC DR TO HSE NO 9154 GLENDON WAY 31FT S C/L + 1255FT E ROSEMEAD BLVD	SG 889
ROSEMEAD (1960)	278.285	L+T W CB CONC DR TO HSE NO 9102 GLENDON WAY 33FT S C/L + 650FT E ROSEMEAD BLVD	SG 890
ROSEMEAD (1960)	279.982	L+BN N CB 1FT E BCR @ NE COR ROSEMEAD BLVD + GLENDON WAY	SG 891

JUL 1964

LOS ANGELES COUNTY ROAD DEPARTMENT
SURVEY SECTION FIELD ENGINEERING DIVISION

PAGE 7

QUAD-YEAR	ELEV	DESCRIPTION (INCLUDE QUAD AND YEAR IN DESCRIPTION)	BM NUMBER
ROSEMEAD (1960)	281.372	L+BN N CB 10FT W BCR @ NW COR ROSEMEAD BLVD + GLENDON WAY	SG 892
ROSEMEAD (1960)	282.022	L+T S CB GLENDON WAY 18FT S C/L + 60FT W C/L IVAR ST	SG 893
ROSEMEAD (1960)	284.596	FC BR DISK ON E WALL OF RUBID WASH 35FT SW C/L INT GLENDON WAY + MUSCATEL AVE 12FT W OF FOOT BRIDGE MKD (58-505)	SG 894
ROSEMEAD (1960)	283.590	CS MON @ C/L INT MUSCATEL AVE + GLENDON WAY	SG 895
ROSEMEAD (1960)	286.834	CS MON @ C/L ANG PT MUSCATEL AVE 250FT N C/L GLENDON WAY + 380FT S C/L MARSHALL ST	SG 896
ROSEMEAD (1960)	287.976	L+BN IN W WINGWALL CONC DRAIN TO FC CHANNEL 10FT N ANG PT MUSCATEL AVE 15FT W C/L OPP HSE 3622	SG 897
ROSEMEAD (1960)	291.519	L+BN E CB 6FT S BCR @ SE COR MUSCATEL AVE + MARSHALL ST MKD (WM 453)	SG 898
ROSEMEAD (1960)	291.130	CS MON @ C/L INT MUSCATEL AVE + MARSHALL ST	SG 899
ROSEMEAD (1960)	304.912	CS MON @ C/L INT MUSCATEL AVE + RALPH ST	SG 900
ROSEMEAD (1960)	309.343	L+SPK S CB 6FT E BCR @ SE COR GUESS ST + MUSCATEL AVE MKD (WM 445)	SG 902
ROSEMEAD (1960)	308.658	CS MON @ C/L INT GUESS ST + MUSCATEL AVE	SG 903
ROSEMEAD (1960)	319.671	CS MON C/L MUSCATEL AVE 100FT S C/L VALLEY BLVD	SG 904
ROSEMEAD (1960)	322.820	CS MON C/L MUSCATEL AVE 100FT N C/L VALLEY BLVD	SG 906
ROSEMEAD (1960)	332.457	CS MON @ C/L INT MUSCATEL AVE + SCOTT ST	SG 907
ROSEMEAD (1960)	333.473	L+T E CB MUSCATEL AVE @ C/L PRCD SCOTT ST 20FT E C/L INT	SG 908
ROSEMEAD (1960)	337.621	L+SPK N CB 5FT E BCR @ NE COR MUSCATEL AVE + LAWRENCE AVE	SG 909
ROSEMEAD (1960)	288.186	L+SPK W CB 5FT BCR @ SW COR RIO HONDO AVE + GUESS ST MKD (WM 354)	SG 910
ROSEMEAD (1960)	289.469	L+SPK E CB 5FT N BCR @ NE COR RIO HONDO AVE + GUESS ST MKD (WM 355)	SG 911
ROSEMEAD (1960)	296.185	L+SPK W CB 6FT S BCR @ SW COR RIO HONDO AVE + STEELE ST MKD (WM 348)	SG 912
ROSEMEAD (1960)	295.609	L+SPK E CB 5FT S BCR @ SE COR VALLEY BLVD + RIO HONDO AVE MKD (R-11)	SG 913
ROSEMEAD (1960)	295.973	CS MON @ PI 190FT N C/L INT VALLEY BLVD + RIO HONDO AVE	SG 916
ROSEMEAD (1960)	298.921	L+T SE COR OF WK TO HSE NO 4023 RIO HONDO AVE 10FT E C/L PRCD 45FT N PI + 235FT N VALLEY BLVD	SG 917
ROSEMEAD (1960)	298.377	L+T N CB OF DR TO HSE NO 4047 2FT W OF END CB + 35FT W C/L RIO HONDO AVE	SG 918

QUAD-YEAR	ELEV	DESCRIPTION (INCLUDE QUAD AND YEAR IN DESCRIPTION)	BM NUMBER
ROSEMEAD (1960)	302.371	CS MON @ C/L INT ROSE ST + RIO HONDO AVE	SG 919
ROSEMEAD (1960)	303.594	L+ SPK N EDGE CONC WK TO HSE NO 4302 @ NE COR RIO HONDO AVE + ROSE ST MKD (WM 244)	SG 920
ROSEMEAD (1960)	306.047	CS MON C/L RIO HONDO AVE OPP N P/L HSE NO 4341 230FT S C/L PITKIN ST	SG 921
ROSEMEAD (1960)	307.001	L+T NE COR OF CONC DR TO HSE NO 4341 RIO HONDO AVE 31FT W C/L	SG 922
ROSEMEAD (1960)	307.708	CS MON @ C/L INT RIO HONDO AVE + PITKIN ST	SG 923
ROSEMEAD (1960)	314.466	CS MON ON PI PITKIN ST IN FRONT OF HSE NO 9279	SG 925
ROSEMEAD (1960)	317.098	L+SPK SW COR CONC WK TO HSE NO 9279 PITKIN ST 60FT N + 12FT E OF PI MKD (WM 256)	SG 926
BASELINE (1955)	315.357	CS MON @ C/L INT LOWER AZUSA RD + TYLER AVE (E EDGE)	SG 962A
ROSEMEAD (1960)	313.018	L+T E CB 1FT N BCR @ NE COR TYLER AVE + RANCHITO ST	SG 963A
ROSEMEAD (1960)	308.934	RD MON @ C/L INT TYLER AVE P MULHALL ST	SG 964
ROSEMEAD (1960)	309.469	L+T NE COR CONC WK TO HSE NO 4541 TYLER AVE 40FT W C/L + 60FT S C/L MULHALL ST	SG 965A
ROSEMEAD (1960)	306.289	RD MON 11FT E C/L INT TYLER AVE + EMERY ST	SG 966A
ROSEMEAD (1960)	302.292	RD MON 25FT E + 25FT S C/L INT TYLER AVE + MC GIRK ST	SG 968A
ROSEMEAD (1960)	304.007	L+BN N END GAS PUMP @ GAS STA NO 4386 50FT E C/L TYLER AVE + 60FT S C/L MCGIRK ST	SG 969A
ROSEMEAD (1960)	298.558	RD MON ON C/L PROD LAMBERT AVE 35FT W C/L TYLER AVE	SG 970A
ROSEMEAD (1960)	301.406	L+T W EDGE CONC WK TO BLDG NO 11011 @ NE COR LAMBERT AVE + TYLER AVE 38FT N + 140FT E C/L INT	SG 971A
ROSEMEAD (1960)	301.025	L+T W CONC CB DR TO HSE NO 11112 38FT S C/L LAMBERT AVE	SG 972
ROSEMEAD (1960)	303.004	L+BN NE COR CONC DR TO HSE NO 4253 30FT W C/L CYPRESS AVE + 55FT S C/L LAMBERT AVE	SG 973
ROSEMEAD (1960)	302.575	RD MON @ C/L INT CYPRESS AVE + LAMBERT AVE	SG 974A
ROSEMEAD (1960)	305.018	L+T CONC APRON TO HSE NO 4261 30FT S C/L LAMBERT AVE ON C/L PROD HUDDART AVE	SG 975
ROSEMEAD (1960)	305.761	L+T NR E EDGE CONC DR TO HSE NO 11265 32FT N C/L LAMBERT AVE + 35FT E C/L PROD CEDAR AVE	SG 978
ROSEMEAD (1960)	305.382	RD MON @ C/L INT LAMBERT AVE + CEDAR AVE TO N	SG 979
ROSEMEAD (1960)	306.548	L+T W EDGE CONC DR TO HSE NO 11322 LAMBERT AVE 30FT S C/L 17FT E C/L PROD CEDAR AVE	SG 980

QUAD-YEAR	ELEV	D E S C R I P T I O N (INCLUDE QUAD AND YEAR IN DESCRIPTION)	BM NUMBER
ROSEMEAD (1960)	309.014	L+T CTR CONC DR TO HSE NO 11403 LAMBERT AVE 30FT N C/L + 300FT W CROSSVALE AVE	SG 981
ROSEMEAD (1960)	312.554	L+BN W CB 3FT N BCR @ NW COR ELRCVIA AVE + LAMBERT AVE	SG 982
BASELINE (1955)	313.559	RDBM TAG E CB 1FT BCR @ NE COR PECK RD + LAMBERT AVE 50FT N + 39FT E C/L INT	SG 984A
ROSEMEAD (1960)	325.486	CS MON 18 IN DN 2FT S + 2FT W C/L INT SAN GABRIEL BLVD + VALLEY BLVD MKD (EL MONTE B3 RE 2177)	SG 1437
ROSEMEAD (1960)	311.162	SPK W CB 10FT S BCR @ SW COR NORWOOD PL + SAN GABRIEL BLVD MKD (WM 21)	SG 1438
ROSEMEAD (1960)	307.547	SPK IN W CB 7FT S BCR @ SW COR MARSHALL ST + SAN GABRIEL BLVD MKD (WM 22)	SG 1439
ROSEMEAD (1960)	293.816	L+T IN E CB SAN GABRIEL BLVD 85FT S C/L HELLMAN AVE	SG 1441
BASELINE (1955)	271.710	CS MON IN WELL 23FT S C/L GARVEY AVE + 14FT W C/L SAN GABRIEL BLVD	SG 1442
ROSEMEAD (1960)	252.512	L+BN IN S CB 20FT W BCR + 340FT NW OF DR TO BLDG NO 3306 ROSEMEAD BLVD	SG 1447A
ROSEMEAD (1960)	251.183	L+BN IN S CB 15FT E BCR + 185FT NW OF DR TO BLDG NO 3306 ROSEMEAD BLVD	SG 1448A
ROSEMEAD (1960)	245.886	L+BN N CB ROSEMEAD BLVD 1FT W BCR + 45FT W C/L WHITMORE ST	SG 1449A
ROSEMEAD (1960)	246.673	L+BN N CB ROSEMEAD BLVD 1FT W BCR + 2FT W OF CATCH BASIN 80FT E C/L WHITMORE ST	SG 1450A
BASELINE (1955)	247.071	FC BR CAP @ NE COR OF CONC BRIDGE NO 53-95 @ GARVEY AVE + RIO HONDO RIVER MKD (EM 57-13)	SG 1451A
BASELINE (1955)	249.197	FC BR CAP @ NW COR OF CONC BRIDGE NO 53-95 @ GARVEY AVE + RIO HONDO RIVER MKD (MB 57-11)	SG 1452A
BASELINE (1955)	282.772	CS MON IN WELL 8IN DN @ NE COR PECK RD + VALLEY BLVD 40FT N + 64FT E C/L INT MKD (BM 15-1)	SG 2324A
BASELINE (1955)	289.122	RDBM TAG W CB 1FT S BCR @ SW COR PECK RD + LEE LANE ST 40FT S + 38FT W C/L INT	SG 2325
BASELINE (1955)	297.385	RDBM TAG SE COR CONC TEL M H @ SE COR PECK RD + FOREST GROVE ST 22FT S + 68FT E C/L INT	SG 2326
BASELINE (1955)	322.054	CS MON IN WELL 9IN DN @ SE COR PECK RD + LOWER AZUSA RD 1FT BACK OF CB FACE + 47FT E + 63FT S C/L INT MKD (BM 15-4)	SG 2327A
BASELINE (1955)	308.594	FC BR CAP MON IN E ABUT @ NE COR OF LOWER AZUSA RD BRIDGE NO B1256 OVER RIO HONDO 32FT N C/L LOWER AZUSA RD + 0.3MI W TYLER AVE	SG 2506
BASELINE (1955)	306.979	RDBM TAG IN N CB LOWER AZUSA RD 3FT W NW COR OF LOWER AZUSA RD BRIDGE NO B1256 OVER RIO HONDO RIVER 25FT N C/L LOWER AZUSA RD + 0.3MI W TYLER AVE	SG 2507
BASELINE (1955)	302.895	CS BM MON IN WELL 17FT N C/L LOWER AZUSA RD + 71FT E C/L EL MONTE AVE MKD (BM 19-7 1952 RE 63)	SG 2508
BASELINE (1955)	313.788	CS MON IN WELL @ C/L INT LOWER AZUSA RD + TEMPLE CITY BLVD	SG 2509

QUAD-YEAR	ELEV	DESCRIPTION (INCLUDE QUAD AND YEAR IN DESCRIPTION)	BM NUMBER
BASELINE (1955)	353.383	L+BN NR N EDGE OF CONC DRWY TO HSE NO 4471 BARTLETT AVE @ SW COR OF MISSION DR 25FT W + 55FT S C/L INT	SG 2517
BASELINE (1955)	355.140	CS MON IN WELL @ C/L INT MISSION DR + WALNUT GROVE AVE	SG 2518
BASELINE (1955)	358.032	L+T IN N CB MISSION DR 5FT E CB RET @ NE COR WILLARD AVE 30FT N + 40FT E C/L INT	SG 2519
BASELINE (1955)	364.889	FC BR CAP IN CONC ABUT @ NE COR OF MISSION DR BRIDGE NO B189 OVER RUBIO WASH 30FT N C/L MISSION DR + 210FT E CHARLOTTE AVE MKD (BM 58-516)	SG 2520
ROSEMEAD (1960)	282.618	RD HD N IN LIN STEEL WASHER ON NE COR VALLEY BLVD + EASTMONT AVE 41FT N + 40FT E C/L INT	SG 2521
ROSEMEAD (1960)	282.710	L+BR N CB 1FT W BCR @ NW COR VALLEY BLVD + EASTMONT AVE 40FT N + 40FT W C/L INT	SG 2522
ROSEMEAD (1960)	286.301	SURVEY MON IN WELL 14IN DN ON C/L MONTEVISTA ST 40FT E C/L TYLER AVE MKD (DIV OF HWY)	SG 2523
ROSEMEAD (1960)	287.038	L+TRANSIT TK N CB 6FT W BCR @ NW COR MONTEVISTA ST + TYLER AVE 32FT N + 65FT W C/L INT	SG 2524
ROSEMEAD (1960)	281.921	SURVEY MON IN WELL 14IN DN @ C/L INT MONTEVISTA ST + HOYT AVE MKD (DIV OF HWYS)	SG 2525
ROSEMEAD (1960)	282.284	L+T TK N CB 5FT W BCR @ NW COR MONTEVISTA ST + HOYT AVE 32FT N + 66FT W C/L INT	SG 2526
ROSEMEAD (1960)	277.675	L+T IN N CB VALLEY BLVD 1FT E CB RET @ NW COR ARDEN DR 38FT N + 60FT W C/L INT	SG 2527
ROSEMEAD (1960)	275.923	L+T IN N CB VALLEY BLVD 1FT E CB RET @ NW COR VELMA ST 38FT N + 60FT W C/L INT	SG 2528
ROSEMEAD (1960)	276.305	L+T IN N CB VALLEY BLVD 1FT E CB RET @ NW COR OF ROWLAND AVE 38FT N + 60FT W C/L INT	SG 2529
ROSEMEAD (1960)	281.196	CS MON IN WELL @ C/L INT ARDEN DR + ROSE ST	SG 2530
ROSEMEAD (1960)	286.079	RDBM TAG IN W CB BALDWIN AVE 40FT W C/L BALDWIN AVE 1FT N CATCHBASIN DPG 32FT S GIDLEY ST	SG 2531
ROSEMEAD (1960)	294.430	L+BR W CB 3FT S BCR @ SW COR TYLER AVE + BRYANT RD 44FT S + 28FT W C/L INT	SG 2532
ROSEMEAD (1960)	294.591	FLAT HD SPK E CB 19FT S BCR @ SE COR TYLER AVE + BRYANT RD 58FT S + 28FT E C/L INT	SG 2533
ROSEMEAD (1960)	326.698	L+BN W CB 1FT W BCR @ SW COR VALLEY BLVD + SAN GABRIEL BLVD 60FT S + 38FT W C/L INT MKD (BM)	SG 2534
ROSEMEAD (1960)	279.879	RD HD SPK W CB 10FT S BCR @ SW COR SAN GABRIEL BLVD + EMERSON PL 50FT S + 38FT W C/L INT MKD (WM 27)	SG 2535
ROSEMEAD (1960)	276.585	RD HD SPK W CB 10FT S BCR @ SW COR SAN GABRIEL BLVD + WHITMORE ST 40FT S + 38FT W C/L INT MKD (WM 28)	SG 2536
BASELINE (1955)	276.063	FC BR CAP IN W WINGWALL 73FT N C/L GARVEY AVE + 225FT W C/L SAN GABRIEL BLVD MKD (BM 55-24)	SG 2537

JUL 1964

LOS ANGELES COUNTY ROAD DEPARTMENT
SURVEY SECTION FIELD ENGINEERING DIVISION

PAGE 11

QUAD-YEAR	ELEV	DESCRIPTION (INCLUDE QUAD AND YEAR IN DESCRIPTION)	BM NUMBER
BASELINE (1955)	250.188	CS ANG PNT MON IN WELL 8IN 17FT NLY OF S CB LINE GARVEY AVE + 18IN ELY OF WLY EDGE PVMT POTRERO AVE MKD (EL MONTE F5)	SG 2569
BASELINE (1955)	262.808	CS MON IN WELL 8IN DN DN SELY COR GARVEY AVE + CENTRAL AVE 40FT S + 180FT E C/L INT 2FT S OF CB FACE MKD (BM 12-7)	SG 2570
BASELINE (1955)	266.760	CS MON IN WELL 11IN DN DN SW COR TYLER AVE + GARVEY AVE 40FT S + 45FT W C/L INT (MKD BM 12-6)	SG 2571